

PRODUCT INFORMATION PACKET

marathon[®]
Motors

Model No: 100LTFC6526

Catalog No: R322A

3 HP General Purpose, 3 phase, 1800 RPM, 230/460 V, 100L Frame, TEFC
Cast Iron TEFC Motors



Regal and Marathon are trademarks of Regal Beloit Corporation or one of its affiliated companies.
©2020 Regal Beloit Corporation, All Rights Reserved. MC017097E

REGAL



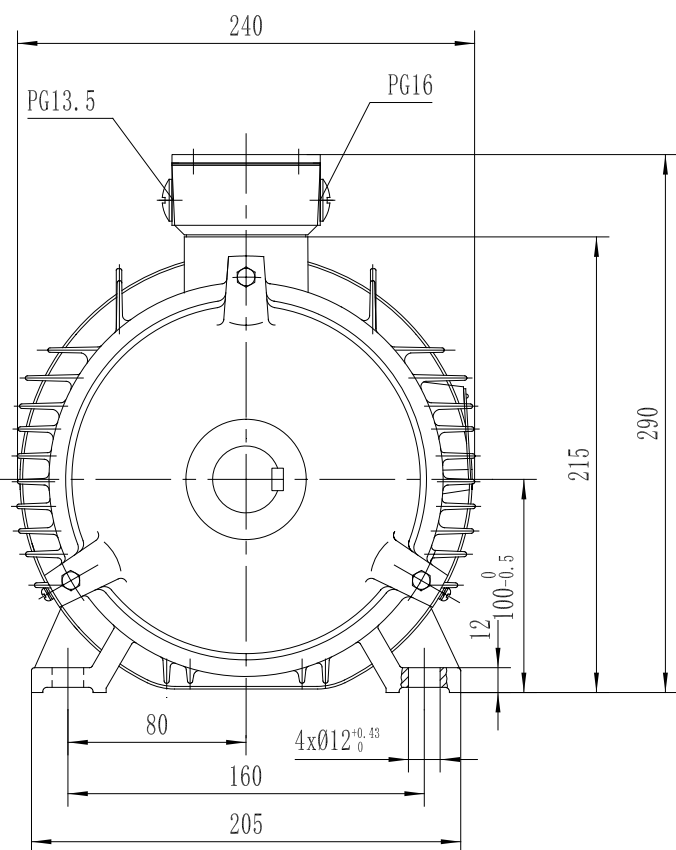
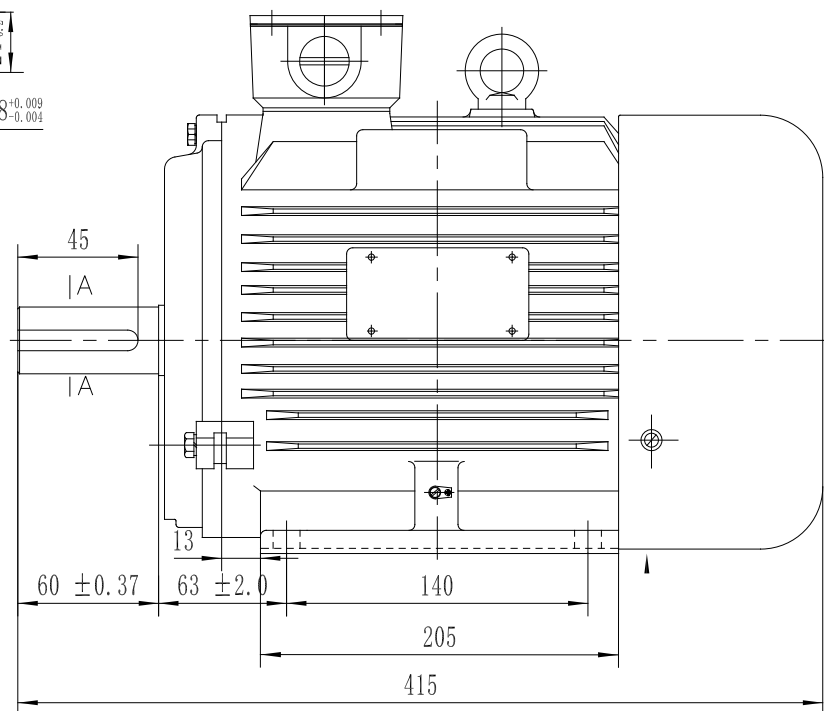
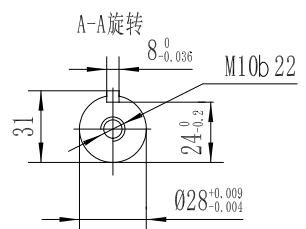
Nameplate Specifications

Output HP	3 Hp	Output KW	2.2 kW
Frequency	60 Hz	Voltage	230/460 V
Current	8.0/4.0 A	Speed	1770 rpm
Service Factor	1.15	Phase	3
Efficiency	90.2 %	Power Factor	79.2
Duty	Continuous	Insulation Class	F
Design Code	B	KVA Code	J
Frame	100L	Enclosure	Totally Enclosed Fan Cooled
Thermal Protection	No	Ambient Temperature	40 °C
Drive End Bearing Size	6206	Opp Drive End Bearing Size	6205
UL	No	CSA	Y
CE	Y	IP Code	55

Technical Specifications

Electrical Type	Squirrel Cage Inverter Rated	Starting Method	Line Or Inverter
Poles	4	Rotation	Reversible
Mounting	Rigid Base	Motor Orientation	Horizontal
Drive End Bearing	Ball	Opp Drive End Bearing	Ball
Frame Material	Cast Iron	Shaft Type	IEC
Overall Length	16.33 in	Shaft Diameter	1.111 in
Shaft Extension	2.36 in	Assembly/Box Mounting	F3
Connection Drawing	005010.01	Outline Drawing	B-SS622236-DF100L1-4R

This is an uncontrolled document once printed or downloaded and is subject to change without notice. Date Created:19/10/2020

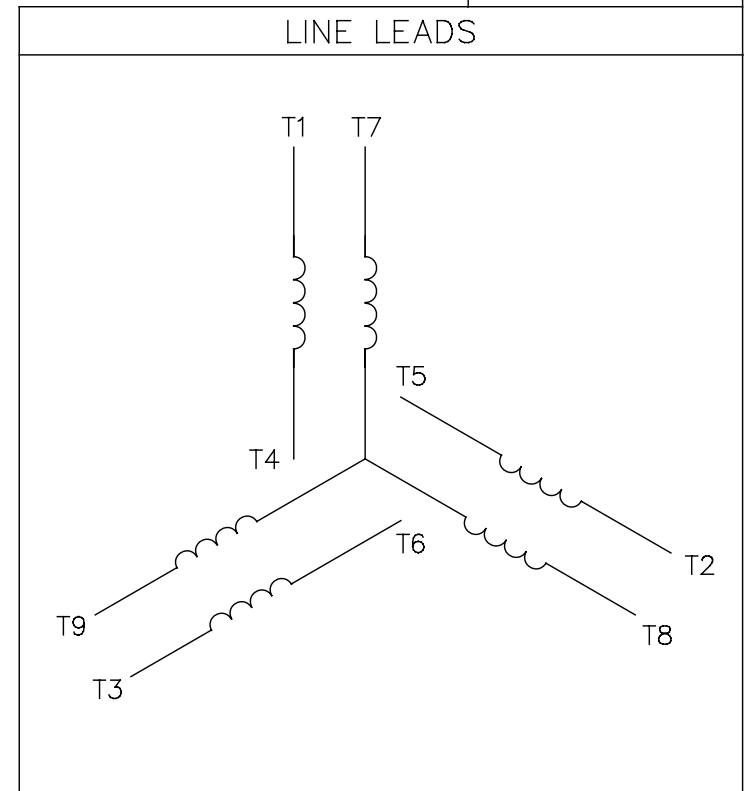
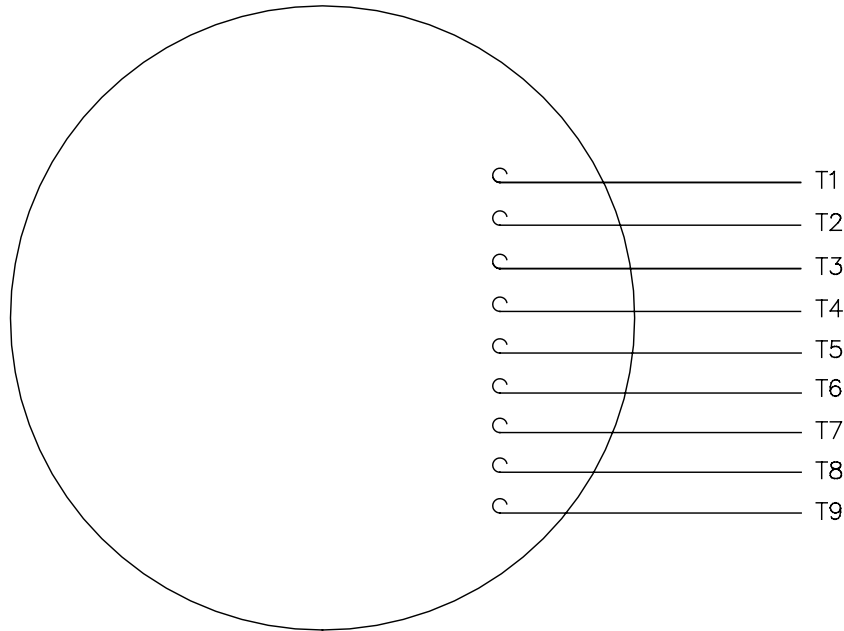


DF100L-2R	193303.60
DF100L1-4R	193301.60
DF100L2-4R	193304.60
DF100L-6R	193300.60
FRAME	PART #

NO.		REVISION		BY & DATE		CHK	TOLERANCES UNLESS SPECIFIED		Regal-Beloit Corporation	DRAWN		
						ANG	DEC.	INCHES		CHK		
							.X	±.1	TITLE OUTLINE	APPD		
							.XX	±.03		SCALE		
							.XXX	±.005		REF		
							.XXXX	±.0005		FMF		
							ANG	±1/2	FINISH	PREV		
THIS DRAWING IN DESIGN AND DETAIL IS OUR PROPERTY AND MUST NOT BE USED EXCEPT IN CONNECTION WITH OUR WORK ALL RIGHTS OF DESIGN AND INVENTION ARE RESERVED THIS IS AN ELECTRONICALLY GENERATED DOCUMENT - DO NOT SCALE THIS PRINT							RFP	CAD FILE		SIZE	DRAWING NO.	REV.
							DIST			B	SS622236	

005010-01

VIEW FROM OUTSIDE OF MOTOR AT SWITCH END.



VOLTAGE	L1	L2	L3	JOIN & INSULATE
HIGH	T1	T2	T3	(T4,T7) (T5,T8) (T6,T9)
LOW	T1,T7	T2,T8	T3,T9	T4,T5,T6

TOLERANCES
UNLESS SPECIFIED

DEC.	INCHES
.X	±.1
.XX	±.01
.XXX	±.005
.XXXX	±.0005
ANG	±1/2°



Regal Beloit America, Inc.

DRAWN RDW 04/12/02

CHK

APPD

SCALE 1=1

REF FIG.2-51

FMF

PREV

A	UPDATED TO REGAL LOGO	SAJ 06/26/15	AJY	.XXXX	±.0005	MAT'L.	DECAL - 004014
NO.	REVISION	BY & DATE	CHK	ANG	±1/2°	FINISH	

THIS DRAWING IN DESIGN AND DETAIL IS OUR PROPERTY AND MUST NOT BE USED EXCEPT IN CONNECTION WITH OUR WORK ALL RIGHTS OF DESIGN AND INVENTION ARE RESERVED THIS IS AN ELECTRONICALLY GENERATED DOCUMENT - DO NOT SCALE THIS PRINT

RFP 04/12/02
DIST BRF-NLV

CAD FILE 00501001

SIZE	DRAWING NO.	REV.
A	005010-01	A

